



# GAT MONTHLY MEMBERSHIP PROGRESS REPORT

Results as of: 6/30/2023

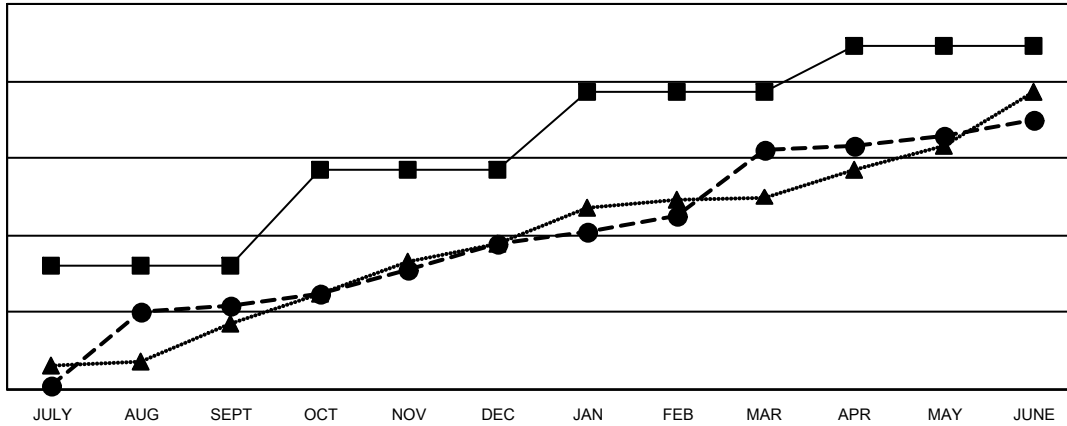
Multiple District 318

LOCATION: INDIA

Clubs			
RESULTS FOR 2022-2023			
QUARTER	NEW CLUB GOAL	NEW CLUBS	DROPPED CLUBS
JULY/AUG/SEPT	32	22	3
OCT/NOV/DEC	25	16	22
JAN/FEB/MAR	20	24	6
APR/MAY/JUNE	12	8	17

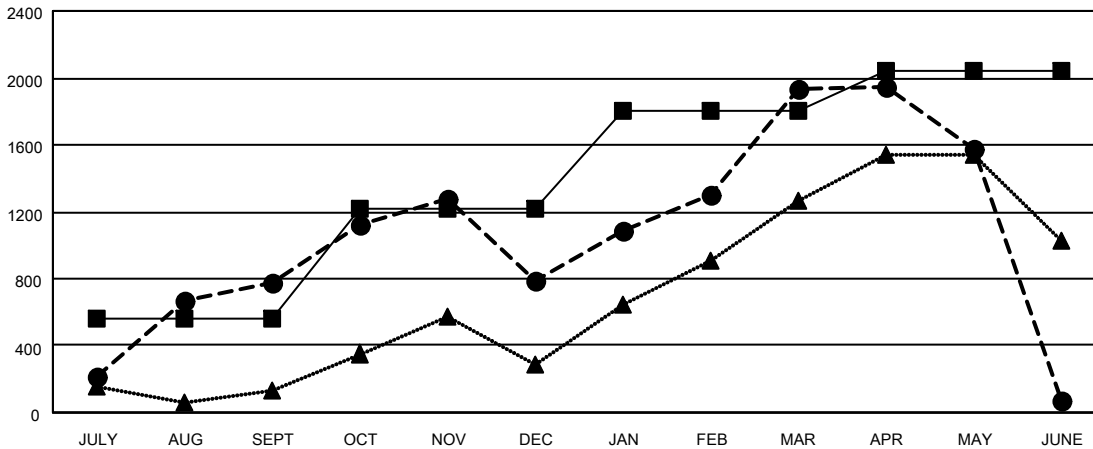
Members			
RESULTS FOR 2022-2023			
QUARTER	MEMBER GROWTH NET GOAL	MEMBER GROWTH ACTUAL	DROPPED MEMBERS ACTUAL (including transfers)
JULY/AUG/SEPT	560	1,361	538
OCT/NOV/DEC	655	1,360	1,259
JAN/FEB/MAR	590	1,572	355
APR/MAY/JUNE	240	808	2,553

GOALS AND ACTUAL NEW CLUBS CUMULATIVE



- - CURRENT YEAR GOALS FOR NEW CLUBS
- - CURRENT YEAR ACTUAL NEW CLUBS
- ▲ - LAST YEAR ACTUAL NEW CLUBS

GOALS AND ACTUAL MEMBERS CUMULATIVE



- - MEMBER GROWTH NET GOAL
- - MEMBER GROWTH ACTUAL
- ▲ - LAST YEAR MEMBERSHIP ACTUAL

<b>DROPPED CLUBS: 48</b>	<b>589 CLUBS OF 830 ADDED 1 OR MORE NEW MEMBERS</b>	<b>GENDER DISTRIBUTION</b>
<b>DROPPED MEMBERS</b>	<a href="#">CLICK HERE FOR CUMULATIVE MEMBERSHIP DATA</a>	MALE 20,543 (81.42%)
DECEASED 137		FEMALE 4,687 (18.58%)
CLUB CANCELLED 929		NON BINARY 1 (0.00%)
OTHER 3,639		PREFER NOT TO ANSWER 1 (0.00%)
<b>TOTAL 4,705</b>		<b>TOTAL FAMILY UNIT MEMBERS 8,050</b>
		<b>FAMILY MEMBERS PAYING HALF DUES 4,251</b>